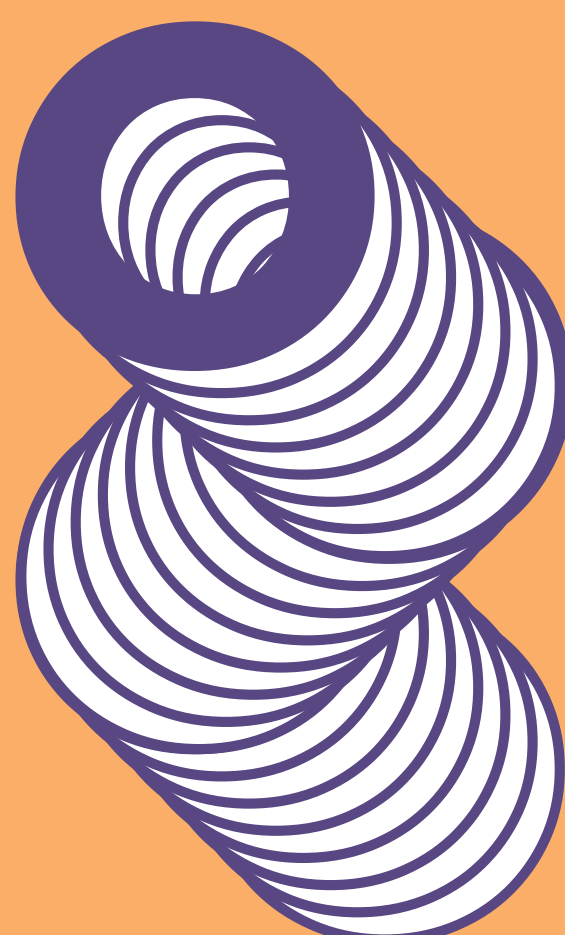
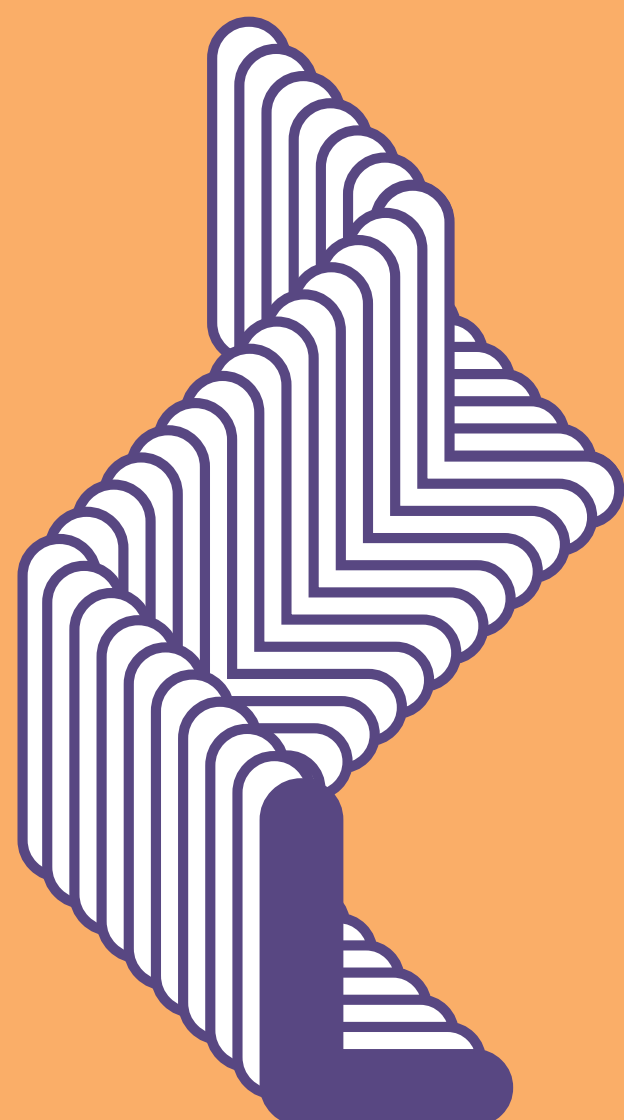
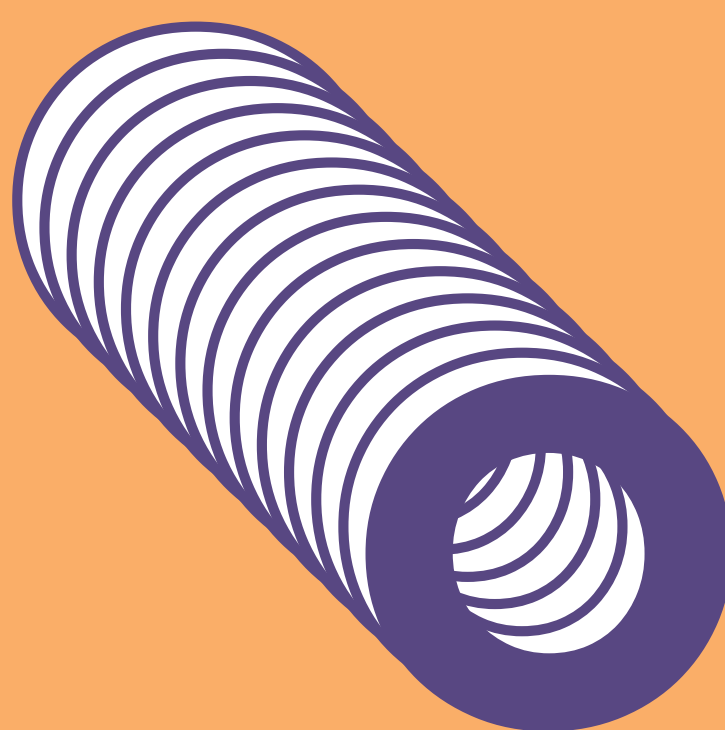


# IS YOUR FRIEND PARANOID ABOUT BEING



If so, they might be suffering from **Psychosis**. A completely treatable mental health condition that affects many people from all walks of life.

Psychosis can play havoc with the signals transmitted to the brain causing them to believe that people might be following or spying on them. We can help with that.

#EPICMINDS



CALL YOUR **LOCAL GP**  
OR **NHS 111**

[WWW.EPICMINDS.CO.UK](http://WWW.EPICMINDS.CO.UK)

IS YOUR FRIEND SHOWING  
SIGNS OF BEING

C

O

N

F

CONSTANTLY?

S

U

E

D

If so, they might be suffering from **Psychosis**. A completely treatable mental health condition that affects many people from all walks of life.

Psychosis can play havoc with the signals transmitted to the brain causing them to feel overwhelmed, confused and scared. We can help with that.

#EPICMINDS



CALL YOUR **LOCAL GP**  
OR **NHS 111**

[WWW.EPICMINDS.CO.UK](http://WWW.EPICMINDS.CO.UK)

HAVE YOU EVER

# LOST **LOST TOUCH WITH REALITY?**

# AND

# DISCONNECTED

# FROM

# LIFE

If so, you might be suffering from **Psychosis**. A completely treatable mental health condition that affects many people from all walks of life.

Psychosis is a condition where you can experience temporary disconnect from reality causing extreme anxiety. We can help with that.

#EPICMINDS



CALL YOUR **LOCAL GP**  
OR **NHS 111**

[WWW.EPICMINDS.CO.UK](http://WWW.EPICMINDS.CO.UK)